

Richland Parish

Adult Skills & Opportunity

Mapped Providers: LDCC, LA Corrections

Sources: Census Bureau 2023 ACS 5 Year Estimates, [NCES PIAAC](#)

Adults Without Foundational Skills



19%

No High School Diploma or Equivalent

52%

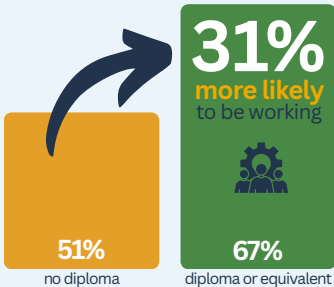


Low Reading, Writing, or Math Skills

2,949 adults in Richland Parish lack a high school diploma or equivalent and 7,894 struggle with basic reading, writing, or math skills.

Economic Impact of Adult Education

Labor Force Participation



Median Annual Earnings



Adults earning diplomas are more likely to join the workforce, reduce their risk of poverty by 42%, and rely less on public assistance—all while helping employers fill jobs with skilled, ready workers.

Adult Education Opportunity

Double the Diplomas. Double the Returns.

\$21

 return for every \$1 invested

Adult education pays off. Every dollar spent creates \$21 in economic return through higher wages and reduced costs.

\$28k

 needed to close the adult skills gap

An increased annual investment would help Richland produce 2x more graduates, strengthening the local workforce.

\$1.2

 million added in local wages over 10 years

Just doubling the annual number of grads once – from 8 to 16 – would boost incomes, increase tax revenue, and lower public costs.

One diploma can transform a life – thousands can transform a community!

Ready to explore the numbers?

Learn more about how adult education drives impact across Louisiana at lapcae.coabe.org/aedata.

