

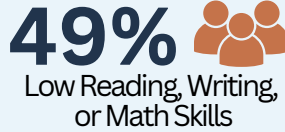
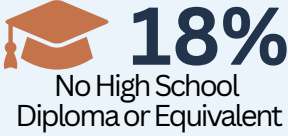
Iberia Parish

Adult Skills & Opportunity

Mapped Providers: SOLACC, VITA

Sources: Census Bureau 2023 ACS 5 Year Estimates, [NCES PIAAC](#)

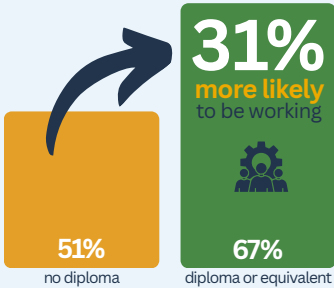
Adults Without Foundational Skills



9,135 adults in Iberia Parish lack a high school diploma or equivalent and 25,219 struggle with basic reading, writing, or math skills.

Economic Impact of Adult Education

Labor Force Participation



Median Annual Earnings



Adults earning diplomas are **more likely to join the workforce**, **reduce their risk of poverty by 42%**, and **rely less on public assistance**—all while helping employers fill jobs with skilled, ready workers.

Adult Education Opportunity

Double the Diplomas. Double the Returns.

\$21 return for every **\$1** invested

Adult education pays off. **Every dollar spent creates \$21 in economic return** through higher wages and reduced costs.

\$207k needed to **close** the **adult skills gap**

An increased annual investment would help **Iberia produce 2x more graduates**, strengthening the local workforce.

\$9.0 million added in local wages over 10 years

Just doubling the annual number of grads once – **from 59 to 118** – would boost incomes, increase tax revenue, and lower public costs.

One diploma can transform a life – **thousands can transform a community!**

Ready to explore the numbers?

Learn more about how adult education drives impact across Louisiana at lapcae.coabe.org/aedata.

